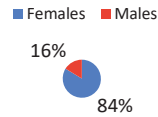


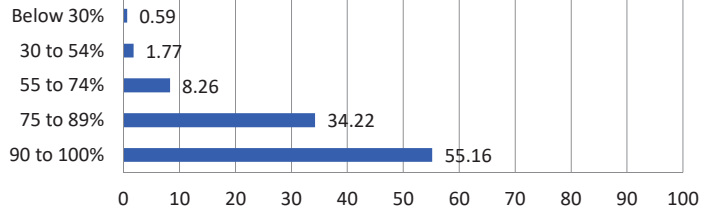
Student Satisfaction Survey (SSS) 2019 -20

D) Gender	Percent
Females	83.80%
Males	16.20%
TOTAL	100.00%
E) What level of degree program are you pursuing now?	Percent
Bachelors	95.90%
Masters	4.10%
TOTAL	100.00%
F) What specific programme are you currently pursuing?	Percent
Dental	100.00%
1. How much of the curricula and syllabi are covered in the Discipline in which you are studying?	Percent
90 to 100%	55.16
75 to 89%	34.22
55 to 74%	8.26
30 to 54%	1.77
Below 30%	0.59
TOTAL	100.00%
2. What categories of teachers are involved in the theory and practical classes in your discipline?	Percent
Professors, Associate Professors, Assistant Professors and Others (Lecturers, Tutors, Demonstrators and Residents)	82.01
Associate Professors, Assistant Professors and others	16.52
Assistant Professors and others	1.47
Others	0.00
None	0.00
TOTAL	100.00%
3. What percentage of teachers is effectively communicating domain knowledge using IT skills and Soft Skills in the Teaching Learning Process?	Percent
90 to 100%	64.60
75 to 89%	28.91
55 to 74%	5.01
30 to 54%	1.18
Below 30%	0.29
TOTAL	100.00%
4. What percentage of the teachers build-up the expected curricular competencies, programme outcomes and course outcomes in you?	Percent
90 to 100%	61.36
75 to 89%	32.15
55 to 74%	5.31
30 to 54%	0.88
Below 30%	0.29
TOTAL	100.00%
5. Does your mentor follow up necessarily on the tasks assigned to you	Percent
Every Time	76.70
Usually	17.99
Occasionally	4.13
Rarely	1.18
I don't have a Mentor	0.00
TOTAL	100.00%

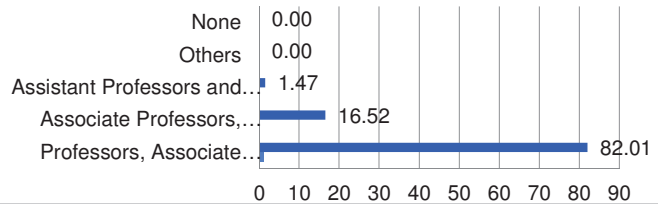
Gender distribution



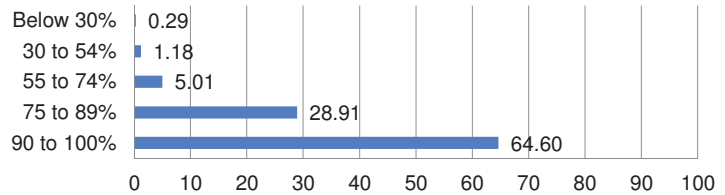
1. How much of the curricula and syllabi are covered in the Discipline in which you are studying?



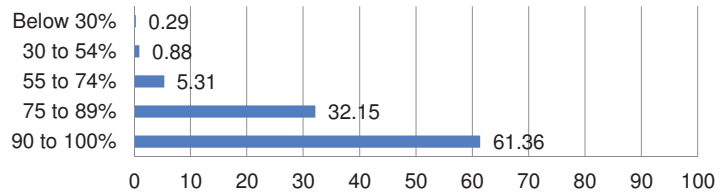
2. What categories of teachers are involved in the theory and practical classes in your discipline?



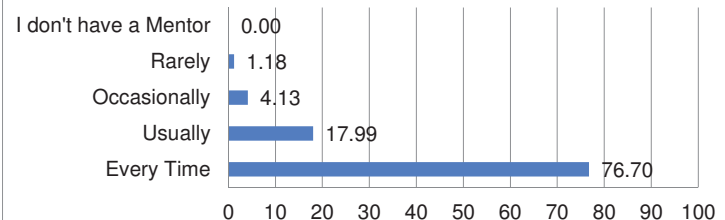
3. What percentage of teachers is effectively communicating domain knowledge using IT skills and Soft Skills in the Teaching Learning Process?



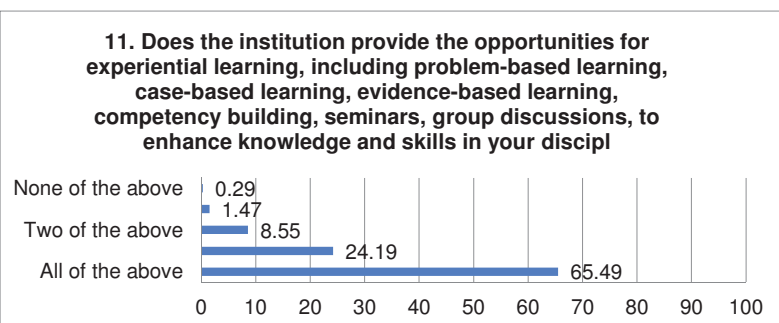
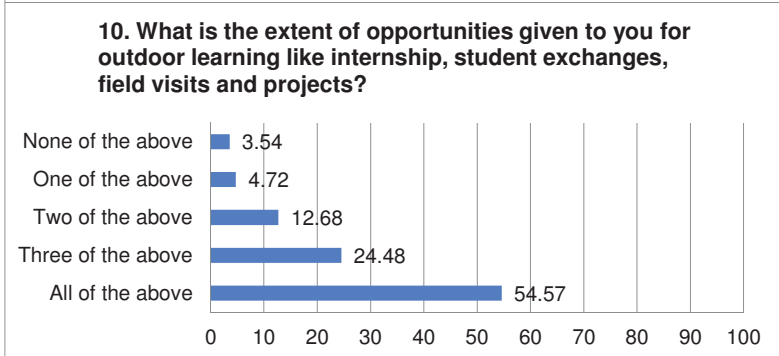
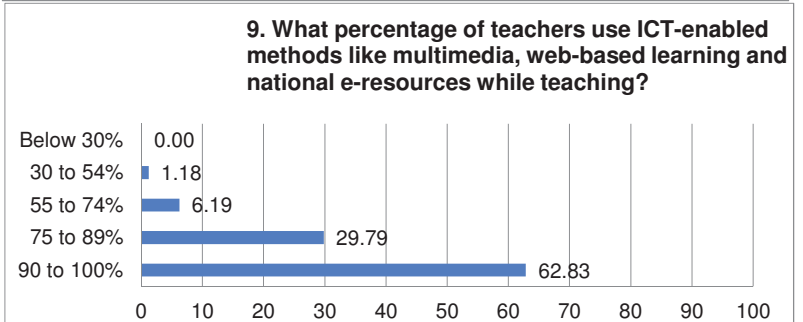
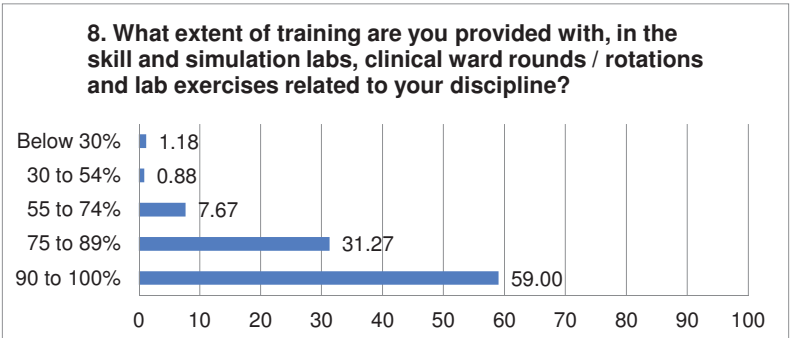
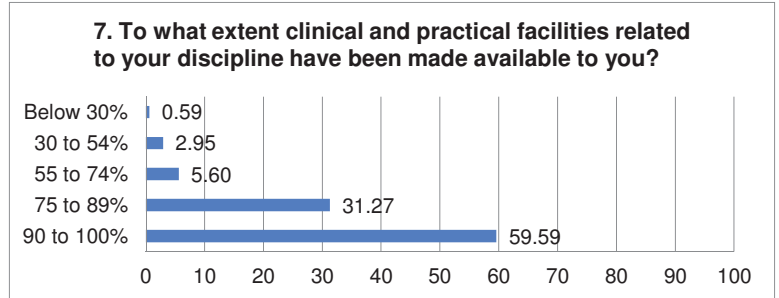
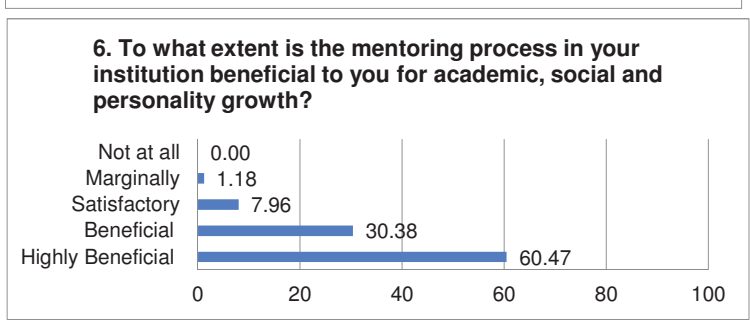
4. What percentage of the teachers build-up the expected curricular competencies, programme outcomes and course outcomes in you?



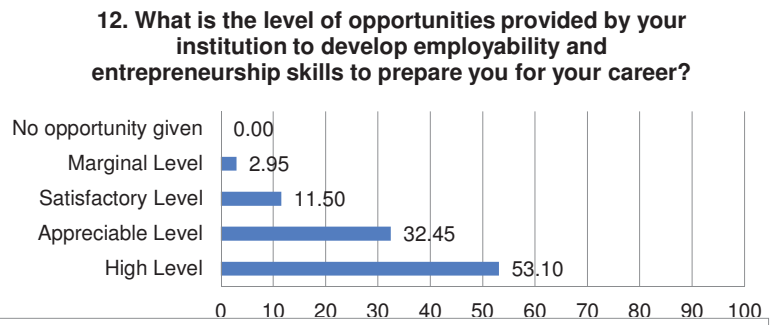
5. Does your mentor follow up necessarily on the tasks assigned to you



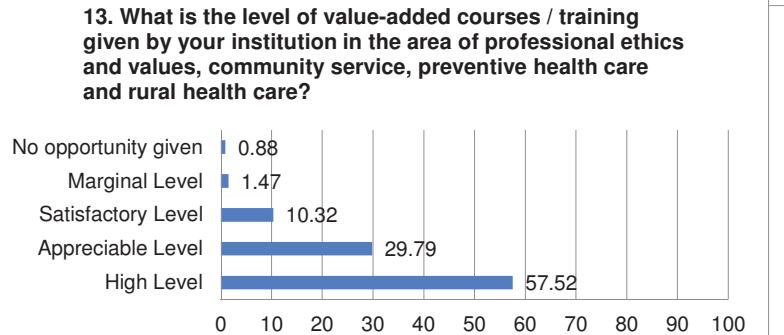
6. To what extent is the mentoring process in your institution beneficial to you for academic, social and personality growth?	Percent
Highly Beneficial	60.47
Beneficial	30.38
Satisfactory	7.96
Marginally	1.18
Not at all	0.00
TOTAL	100.00%
7. To what extent clinical and practical facilities related to your discipline have been made available to you?	Percent
90 to 100%	59.59
75 to 89%	31.27
55 to 74%	5.60
30 to 54%	2.95
Below 30%	0.59
TOTAL	100.00%
8. What extent of training are you provided with, in the skill and simulation labs, clinical ward rounds / rotations and lab exercises related to your discipline?	Percent
90 to 100%	59.00
75 to 89%	31.27
55 to 74%	7.67
30 to 54%	0.88
Below 30%	1.18
TOTAL	100.00%
9. What percentage of teachers use ICT-enabled methods like multimedia, web-based learning and national e-resources while teaching?	Percent
90 to 100%	62.83
75 to 89%	29.79
55 to 74%	6.19
30 to 54%	1.18
Below 30%	0.00
TOTAL	100.00%
10. What is the extent of opportunities given to you for outdoor learning like internship, student exchanges, field visits and projects?	Percent
All of the above	54.57
Three of the above	24.48
Two of the above	12.68
One of the above	4.72
None of the above	3.54
TOTAL	100.00%
11. Does the institution provide the opportunities for experiential learning, including problem-based learning, case-based learning, evidence-based learning, competency building, seminars, group discussions, to enhance knowledge and skills in your discipline?	Percent
All of the above	65.49
Three of the above	24.19
Two of the above	8.55
One of the above	1.47
None of the above	0.29
TOTAL	100.00%



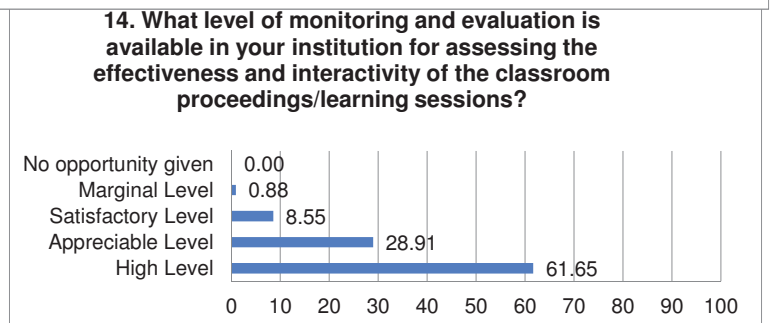
12. What is the level of opportunities provided by your institution to develop employability and entrepreneurship skills to prepare you for your career?	Percent
High Level	53.10
Appreciable Level	32.45
Satisfactory Level	11.50
Marginal Level	2.95
No opportunity given	0.00
TOTAL	100.00%



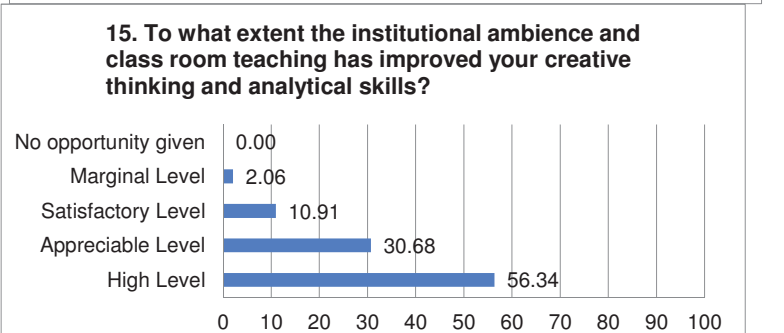
13. What is the level of value-added courses / training given by your institution in the area of professional ethics and values, community service, preventive health care and rural health care?	Percent
High Level	57.52
Appreciable Level	29.79
Satisfactory Level	10.32
Marginal Level	1.47
No opportunity given	0.88
TOTAL	100.00%



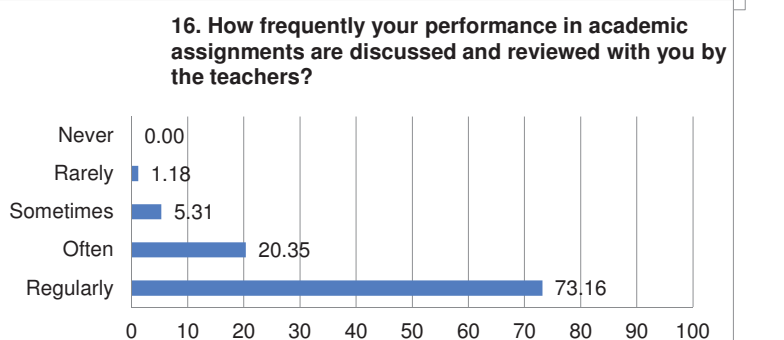
14. What level of monitoring and evaluation is available in your institution for assessing the effectiveness and interactivity of the classroom proceedings/learning sessions?	Percent
High Level	61.65
Appreciable Level	28.91
Satisfactory Level	8.55
Marginal Level	0.88
No opportunity given	0.00
TOTAL	100.00%



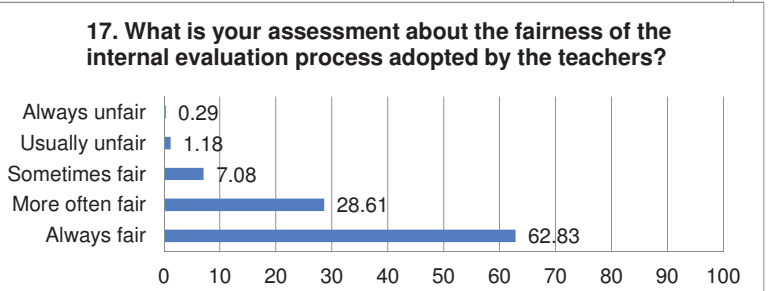
15. To what extent the institutional ambience and class room teaching has improved your creative thinking and analytical skills?	Percent
High Level	56.34
Appreciable Level	30.68
Satisfactory Level	10.91
Marginal Level	2.06
No opportunity given	0.00
TOTAL	100.00%



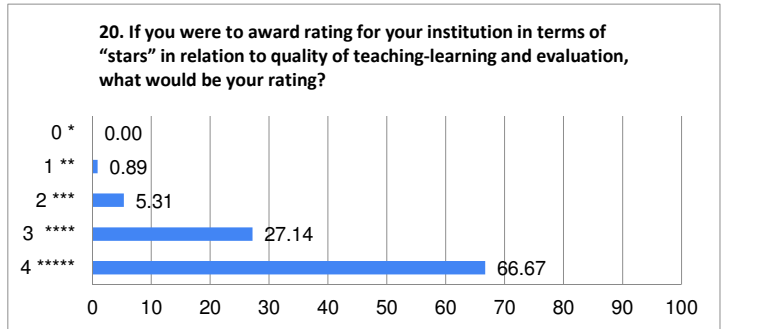
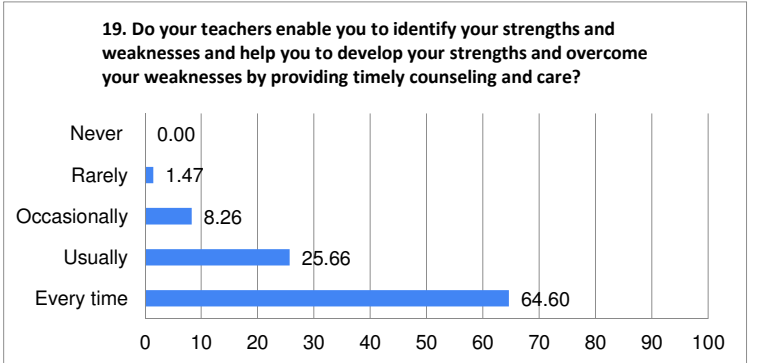
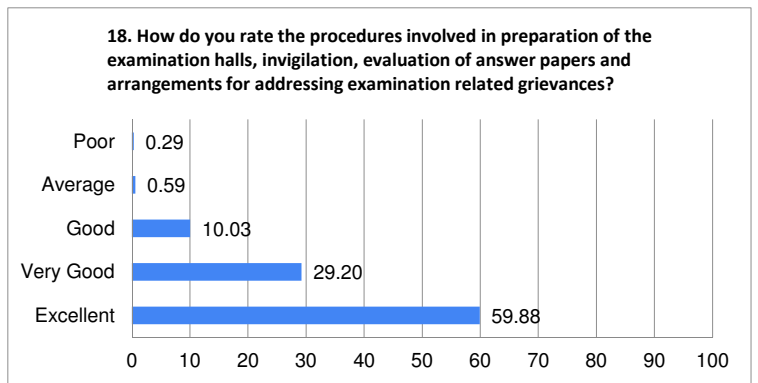
16. How frequently your performance in academic assignments are discussed and reviewed with you by the teachers?	Percent
Regularly	73.16
Often	20.35
Sometimes	5.31
Rarely	1.18
Never	0.00
TOTAL	100.00%



17. What is your assessment about the fairness of the internal evaluation process adopted by the teachers?	Percent
Always fair	62.83
More often fair	28.61
Sometimes fair	7.08
Usually unfair	1.18
Always unfair	0.29
TOTAL	100.00%



18. How do you rate the procedures involved in preparation of the examination halls, invigilation, evaluation of answer papers and arrangements for addressing examination related grievances?	Percent
Excellent	59.88
Very Good	29.20
Good	10.03
Average	0.59
Poor	0.29
TOTAL	100.00%
19. Do your teachers enable you to identify your strengths and weaknesses and help you to develop your strengths and overcome your weaknesses by providing timely counseling and care?	Percent
Every time	64.60
Usually	25.66
Occasionally	8.26
Rarely	1.47
Never	0.00
TOTAL	100.00%
20. If you were to award rating for your institution in terms of "stars" in relation to quality of teaching-learning and evaluation, what would be your rating?	Percent
4 *****	66.67
3 ****	27.14
2 ***	5.31
1 **	0.89
0 *	0.00
TOTAL	100.00%



21. Give three suggestions to improve the overall teaching, learning and evaluation process in your institution.

- 1 Online medium for teaching and studying is not as efficient as offline teaching.
- 2 Make every classroom a smart classroom.
- 3 More use of multimedia should be done for teaching.

Analysis of Student Satisfaction Survey (2019 - 20)

The inferences that can be drawn from the student satisfaction survey are that -

- **Curriculum** - The syllabus is completed well in time and all topics are addressed in their curriculum. All levels of teachers including Head of Departments are keen in teaching students using IT communication methods, traditional methods or a combination of both methodologies for effective communication of concepts.
- **Teaching** - The mentoring system in the institute is good and students feel that they are well guided in developing the required curricular competencies by their teachers. The students are of the opinion that keen follow-up on their progress is kept by their teachers and they find the mentoring system extremely satisfying.
- **Learning** - The facilities provided for clinical and practical training in the Laboratory and Clinical wards are adequate and the students are satisfied by their availability and accessibility. Students have opined that more than 90% of teachers are well equipped and aware of the use of ICT enabled Teaching methods. The students get adequate opportunities for outdoor and experiential learning.
- **Assessment** - The guidelines laid by the statutory bodies are followed meticulously during the evaluation and assessment of examination papers. The students are satisfied by the procedure and fairness of the evaluation pattern. The students are informed of their shortcomings and are advised regarding ways to overcome them so that they can improve their performance in Final Exams.
- **Perception of ambience of the institute** - The students agreed that classroom teachings are monitored very effectively and the overall ambience and atmosphere in the institute has added to their academic acumen. Students are overwhelmed that the institute is concerned about their future prospectives and provides opportunities for improving employability and placement.